

Anti-Mouse_CCR8 mIgG2a Antibody

Product Information

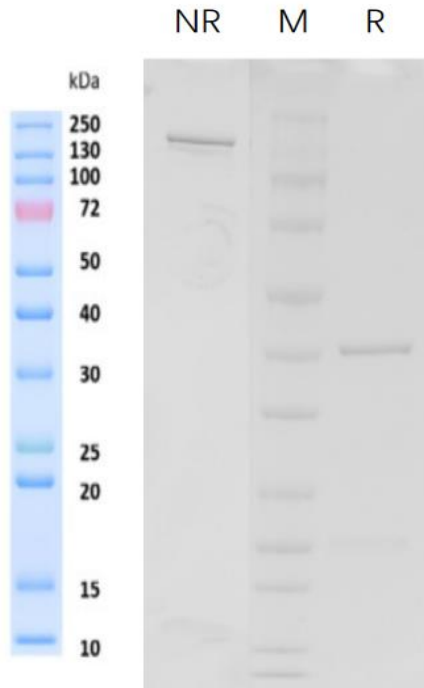
Product Name	Anti-Mouse_CCR8 mIgG2a Antibody
Storage temp.	Store at 2-8°C short term (1-2 weeks).Store at \leq -20°C long term. Avoid repeated freeze-thaw.
Catalog# / Size	GM-28205AB-1mg / 1 mg GM-28205AB-5mg / 5 mg GM-28205AB-25mg / 25 mg GM-28205AB-50mg / 50 mg GM-28205AB-100mg / 100 mg

Antibody Information

Expression System	CHO
Aggregation	< 5% as determined by SEC-HPLC
Purity	> 95% as determined by SDS-PAGE
Endotoxin	< 1 EU/mg, determined by LAL gel clotting assay
Sterility	0.2 μ m Filtered
Target	CCR8
Clone	/
Alternative Names	CY6; TER1; CCR-8; CKRL1; CDw198; CMKBR8; GPRCY6; CMKBRL2; CC-CKR-8
Source/Isotype	Monoclonal Mouse IgG2a, κ
Application	Flow cytometry; CDX model
Description	CCR8, also known as ChemR1, TER1, and CKR-L1, belongs to the beta chemokine receptor family. It is predicted to be a seven transmembrane protein similar to G protein-coupled receptors. CCR8 is expressed on some subsets of T cells, monocytes, macrophages, eosinophils, thymocytes, Langerhans cells, neurons, and vascular smooth muscle cells. Binding with its ligand CCL1, CCR8 plays a role in the regulation of monocyte chemotaxis and thymic cell apoptosis. It has been reported that CCR8 is also a receptor for CCL18. CCR8 is also believed to be an alternative coreceptor to CD4 for HIV-1 infection.
Formulation	Phosphate-buffered solution, pH 7.2

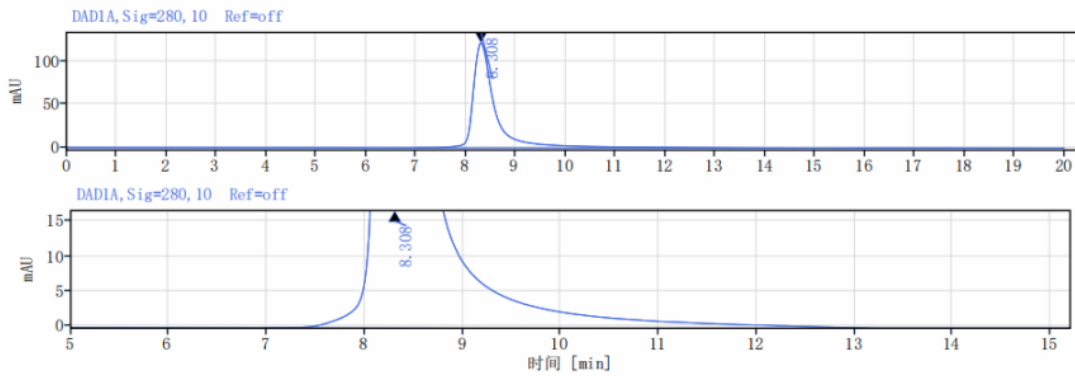
Version:3.1.1 Revision Date:15/08/2023

SDS-PAGE



On SDS-PAGE under reducing (R)/non-reducing(N-R) condition. The gel was stained overnight with Coomassie Blue. The purity of the protein is greater than 95%.

SEC-HPLC

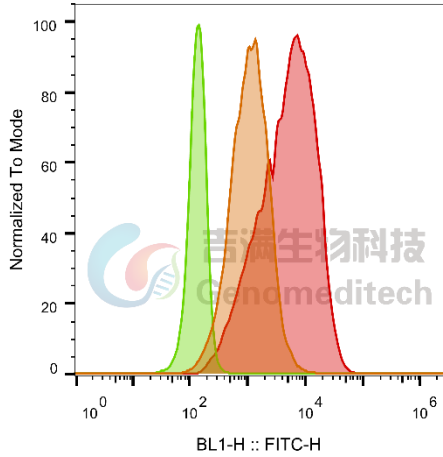


The purity of this product is more than 95% verified by SEC-HPLC.

Data Examples

Flow cytometry

The recommended usage range is 0.5-4 μg per test. Mouse_CCR8 CHO-K1 Cell Line (Catalog # GM-C09426) was stained with Anti-Mouse_CCR8 mlgG2a Antibody (Catalog # GM-28205AB) or isotype control antibody, followed by anti-Mouse IgG FITC-conjugated Secondary Antibody.



SampleID	Geometric Mean : BL1-H
CHO-K1 anti-M_CCR8+FITC-2nd Ab	1076
CHO-K1 M_CCR8 M_IgG+FITC-2nd Ab	134
CHO-K1 M_CCR8 anti-M_CCR8+FITC-2nd Ab	4644

CDX model

Anti-Mouse_CCR8 mlgG2a Antibody (Catalog # GM-28205AB) efficacy on CT-26 syngeneic model

